

Announcing ATCLink v3.7.007

Peek is pleased to announce the release of Version 3.7.007 of the ATCLink™ software utility for ATC controller configuration. ATCLink is a Windows application that allows an on-site operator to easily program a Peek ATC traffic controller. This is the initial release of ATCLink.

Product **ATCLink**
Version **Version 3.7.007**
Release Date **April 29, 2011**

Product Requirements

Version 3.7.007 of the ATCLink software requires a Windows compatible computer running Windows 2000, Windows XP (Professional versions), or Windows 7 Professional. ATC Link is not approved for operation under Windows Vista, nor is it approved for use with 64 bit versions of these operating systems.

Contents

Installation Notes.....	2
New Features.....	4
Additional Guidance.....	5

Product Compatibility

The operation of the software also requires a communications path to the Peek ATC-family traffic controller you plan to manage, either via a direct Serial connection or an Ethernet connection. The operator can opt to work in an 'offline' mode, meaning that no live connection is made to a controller, if he or she is working on a controller database in memory, or when exporting controller programming to a USB thumb-drive. However, most other operations within the software utility require an active connection to a powered traffic controller. The software will assume, by default, that a connection to a controller is desired, so it will attempt to make such a connection unless you tell it, during each session within the software, that you do not wish to connect to a controller.

Table 1 – ATCLink Version 3.7.007 Workstation Requirements

	Minimum	Ideal
Processor	Intel P4 or equivalent, or better	Intel P4 or equivalent, or better
Processor Clock speed	1.2 GHz	2.0 GHz+
RAM	512 MB	1 GB+
Free Disk Space	150 MB	2 GB+

The ATC controller being managed should have version 3.7 or higher of the GREENWave™ firmware installed to be compatible with ATCLink Version 3.7.007.

Installation Notes

The following procedure describes how to install the ATCLink Version 3.7.007 software.

1. Verify that the operating system is at Windows 2000, Windows XP or Windows 7 (32 bit Professional level versions, not home or media center versions, and not 64 bit), with the latest service packs and security updates from Microsoft installed. (ATCLink is not compatible with Windows Vista.)
2. If this is a new installation of either ATCLink on this computer, and you plan to connect to a controller using a serial connection, you will need to configure the Windows operating system with its add-on SNMP service. (The SNMP Service is not required for Ethernet communications to the ATC controllers.) To add this service to your version of Windows, you will need the Windows installation disk(s). These are the steps to install the SNMP service:
 - a.) Go to the **Start** menu and choose **Settings>Control Panel>Add/Remove programs**. When the window appears, choose the **Add/Remove Windows Components** button on the left side of the window.
 - b.) Scroll down, highlight the **Management and monitoring tools** item, and press the **Details** button.

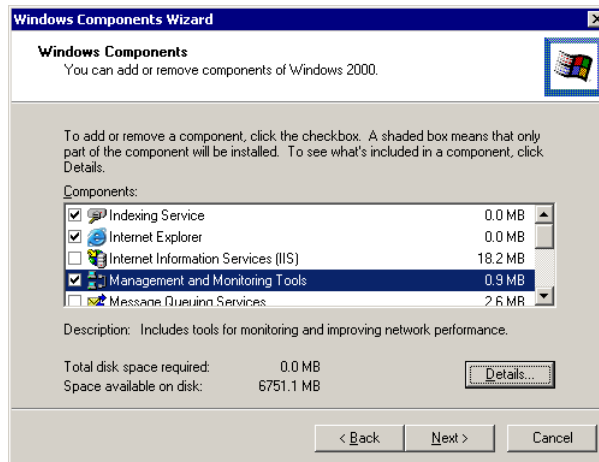


Figure 1 – Windows Component wizard window - Management and Monitoring Tools

- c.) Check the **Simple Network Management Protocol** option, and then press **OK**.
- d.) Insert the Windows CD, if requested.
- e.) After the installation is complete, we will need to configure the SNMP Service for operation with ATCLink. Go to the **Start** menu again, and choose **Start>Settings>Control Panel>Administrative Tools>Services**.
- f.) Scroll down and right-mouse click on **SNMP Service**, and choose **Properties**.

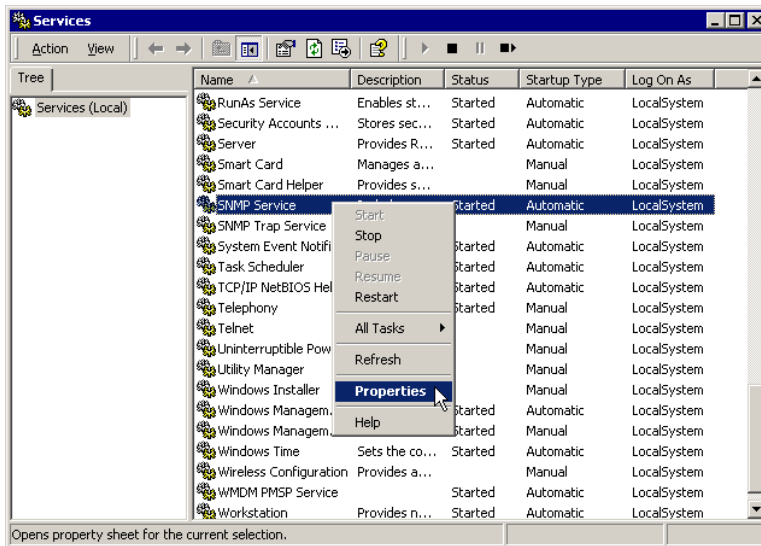
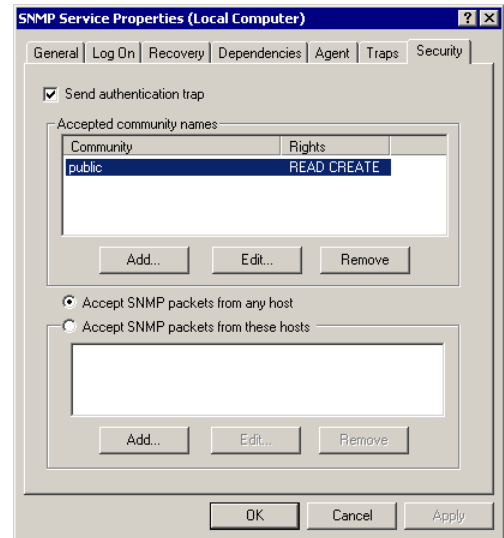


Figure 2 – Opening the SNMP Service > Properties window

- g.) Select **Properties**.
- h.) Select the **Security** tab.
- i.) Make sure “public” appears in the Community field, with READ CREATE in the corresponding rights field. If not, then either edit the existing field or add a new one to create a “public” listing in the Community field. The Community name is case sensitive, so be sure to use the lower-case “public”, not “PUBLIC” or “Public”.

Figure 3 – Defining the SNMP Service ‘community’ value



3. Insert the ATLink Installation CD into the CD-ROM drive of the computer.
4. If autorun is working on this drive, the Install CD interface should appear automatically. If 'autoplay' is not configured for this CD-ROM drive on this computer, open a Windows Explorer window and navigate to the drive. Locate the **setup.exe** file and double-click it. This will open the application installer.
5. Follow the on-screen directions.
6. When the installation is complete, click the **Finish** button.
7. Go into the Windows Start menu and choose **Programs > Peek Traffic > ATLink**
8. When the application opens, you will be asked for a user name and password.
 - The default account user name is **USTC_ADMINISTRATOR** for both fields. (The fields are case sensitive, and the default password must be in all capitals.)
9. When you get into the application, as a security precaution, you should create a new Administrator level user account and password, and remove the default user account. These actions can be performed using the commands on the **Login** menu.

That completes the installation of ATLink.

New Features

This version of ATCLink supports the following controller features:

Under Phase-based Operation

- 16 phases
- 64 vehicle detectors
- 16 speed traps
- 8 pedestrian detectors
- 48 patterns
- 16 splits
- 16 four ring sequences
- 16 channels
- 6 preemption runs
- 32 vehicle overlaps
- 16 pedestrian overlaps
- 32 day plans
- 8 TSP detectors

Under Interval-based Operation

- 32 timing plans
- 4 signal plans
- 24 intervals
- 6 preemption runs

Other Important Features Available in Version 3.7.007

(When compared to IQ Link, version 3.10)

- Additional overlap support
- Additional TSP support
- Added the ability to run on the same PC as IQLink
- Added new process control
- Added additional coordination support
- Added new preempt support
- Added support for interval preemption: 24 intervals for track, dwell and exit intervals
- Updated the configuration page
- Support for all of the new ATC controller data blocks

Additional Guidance

For more guidance on the configuration and usage of ATCLink, refer to the following documents and contacts.

Documentation

These additional documents provide useful information for the operation of ATCLink, and many of the hardware often used in conjunction with ATCLink.

Table 2 — Additional documentation

Document	Part Number
ATCLink Operating Manual	81-1366
ATC Controller Operating Manual	81-1285
GREENWave Firmware Release Notes	99-545
IQ Link Operating Manual	81-1202
IQ Link Release Notes	99-490

Technical Support

This contact information will connect you with the technical support staff of Peek Traffic Corporation, should you require additional help concerning ATCLink.

Peek Traffic Corporation - Customer Service Center

2906 Corporate Way
Palmetto, FL 34221
toll free in the U.S.: (800) 245-7660
tel: (941) 845-1200
fax: (941) 845-1504
email: tech.support@peektraffic.com
web: www.peektraffic.com